

Features and aim of Kitakyushu ESD

Education for Sustainable Development

Base

To promote citizen's activities
Members of the Kitakyushu ESD Council consisting of citizen's groups, enterprises and schools practice ESD by making the best use of their own unique traits

Outgrowth

To put emphasis on the importance of "correlation", "outgrowth" and "sharing" successfully implemented through cooperation among various groups from industry, academia, the government and citizens, utilizing the knowledge gained from efforts in environmental education up to the present.

How to learn

To promote "experience-based" learning, aiming at an education that fosters people capable of "finding", "learning", "thinking" and "acting".

Efforts to popularize ESD

~ Fostering human resources to successfully become an Environmental Capital of the World ~



ESD future creation seminar

Efforts are made to foster ESD coordinators who will be the key persons for arrangement and coordination to propagate ESD activities.



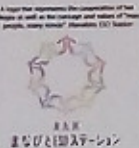
Environmental education in Ainoshima Island (in Kokurakita-ku)

College students and elementary school children learn ESD through experiencing fishing and collecting garbage floating in the ocean.



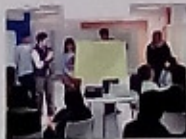
International exchange between Ogura Junior High School (in Yahatahigashi-ku) and RCE Tongyeong (in Korea)

Schools in the city are encouraged to register with the UNESCO Associated Schools Project Network which promotes ESD from an international point of view.



Manabito ESD Station

To be a local center that is a model for ESD promotion through the collaboration of 10 colleges in the city is their goal.



Kyushu ESD Network Promotion Council

To enhance and propagate the cooperation in ESD activities all over Kyushu.



Activities at community-center

At each of the approximately 130 community-center for the school districts, established as a base for local activities, sustainable town creation is practiced through various activities for people of all ages.

Aim: ESD being practiced by one million people in the city

The results of practicing ESD are to be transmitted to the world as a model case of ESD through exchange and collaboration with domestic and overseas RCEs. Kitakyushu is one of the RCE areas and a base for promoting ESD.

Position of ESD in Kitakyushu City

The City of Kitakyushu, aiming to be an Environmental Capital of the World, is working on ESD as part of the city's master plan as well as for plans in various other fields, positioning it as one of the main measures of the city.

"Energetic Kitakyushu!" Plan (Kitakyushu City Master Plan)

(est. in December 2008)

Fostering persons: Raising human resources for underpinning the development of the city.

Kitakyushu City Basic Environmental Plan

(est. in February 2013)

Promoting sustainable development of citizens' power to preserve the environment.

Kitakyushu City Lifelong Study Promotion Plan

(est. in July 2011)

Fostering the leaders of local activities, utilizing the results of learning and more.

